



**genesis**<sup>TM</sup>  
NP

**NP200-12R**  
**NP200-12RFR**

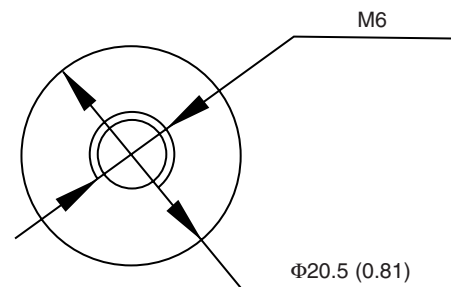
*Sealed Rechargeable  
Lead-Acid Battery*

**12V, 200Ah**

## Specifications

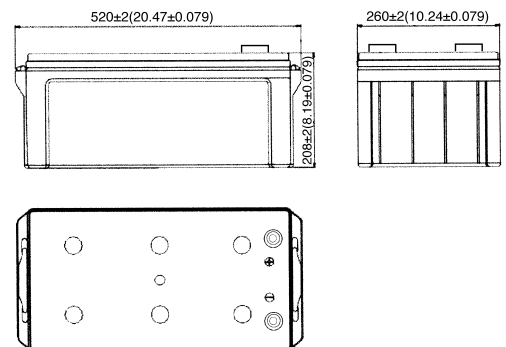
- **NOMINAL VOLTAGE:** 12V
- **NOMINAL CAPACITY:**
  - 20 hr. rate of 10.0A to 10.5V 200.0Ah
  - 10 hr. rate of 18.0A to 10.5V 180.0Ah
  - 5 hr. rate of 32.0A to 10.2V 160.0Ah
  - 1 hr. rate of 120.0A to 9.60V 120.0Ah
- **WEIGHT (approx.):** 163.1 pounds (74.0 Kg)
- **ENERGY DENSITY (20 hr. rate):** 1.40 WH/cubic inch (85 WH/liter)
- **SPECIFIC ENERGY (20 hr. rate):** 14.7 WH/pound (32 WH/Kg)
- **INTERNAL RESISTANCE OF CHARGED BATTERY:** 4 milliohms (approx.)
- **MAXIMUM DISCHARGE CURRENT WITH STANDARD TERMINALS:** 1600 amperes
- **MAXIMUM SHORT-DURATION DISCHARGE CURRENT:** 4000 amperes
- **OPERATING TEMPERATURE RANGE:**
  - CHARGE 5°F to 122°F (-15°C to 50°C)
  - DISCHARGE -4°F to 140°F (-20°C to 60°C)
- **CHARGE RETENTION (shelf life) at 68°F (20°C):**
  - 1 month 97%
  - 3 months 91%
  - 6 months 85%
- **LIFE EXPECTANCY:**
  - STANDBY USE** 3 to 5 years
  - CYCLE USE (approx.):**
    - 100% depth of discharge 250 cycles
    - 50% depth of discharge 550 cycles
    - 30% depth of discharge 1200 cycles
- **SEALED CONSTRUCTION:** Can be operated in any position without leakage.
- **STANDARD TERMINAL:** Receptacle M6
- **HOUSING MATERIAL:** ABS Resin
- **OPTIONAL:** Container and cover made from Flame Retardant ABS (UL94-V0/L.O.I.>28%)
- **HARDWARE:** 2-M6 x 16mm Bolt w/ (2) lock washers - (6mm) & (2) flat washers - (6mm)

## Terminal



DIMENSIONS: MM (INCHES)

## Dimensions



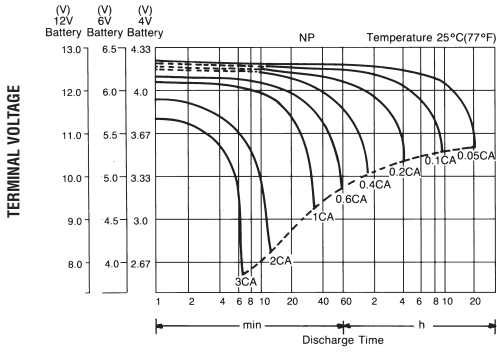
DIMENSIONS: MM (INCHES)

UL listing pending - File No MH16464

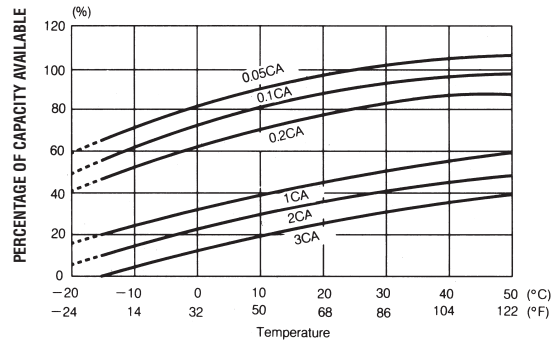
**EnerSys**<sup>TM</sup>  
Power/Full Solutions



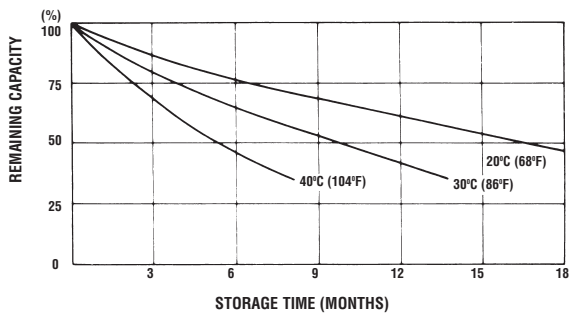
### DISCHARGE CHARACTERISTIC CURVES AT 25°C (77°F)



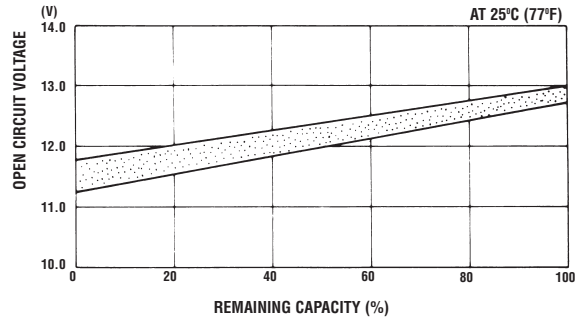
### TEMPERATURE EFFECTS IN RELATION TO BATTERY CAPACITY



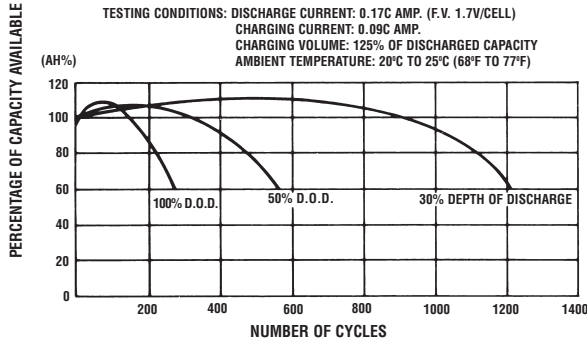
### SELF DISCHARGE CHARACTERISTICS



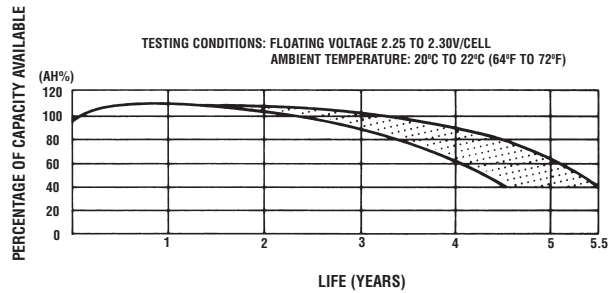
### OPEN CIRCUIT VOLTAGE VS REMAINING CAPACITY



### CYCLE SERVICE LIFE IN RELATION TO DEPTH OF DISCHARGE



### FLOAT SERVICE LIFE



When the battery will be used by current in excess of 3C, consult with EnerSys prior to use.

#### CHARGING METHODS (At 20°C)

**Cycle use:** Maximum charging current 0.25C  
Charging voltage 14.4 to 15.0V  
**Standby use:** Float charging voltage 13.50 to 13.80V

**CAUTION** •Avoid short circuit.  
•Do not charge in a sealed container.



**EnerSys**  
P.O. Box 14145  
Reading, PA 19612-4145  
USA  
Tel: +1-610-208-1991  
+1-800-538-3627  
Fax: +1-610-372-8613

**EnerSys EMEA**  
Brussels, Belgium  
Tel: +32 (0)2 247 94 47

**EnerSys Asia**  
Guangdong, China  
Tel: +86-755-2689 3639

**EnerSys Limited**  
Rake Lake,  
Clifton Junction,  
Swinton, Manchester  
M27 8LR, UK  
Tel: +44 (0) 161 794 4611  
Fax: +44 (0) 161 727 3809

Represented by:

© 2006 EnerSys. All rights reserved.  
Trademarks and logos are the property of EnerSys and its affiliates unless otherwise noted.