

genesis
NP

NP4.5-6
NP4.5-6FR

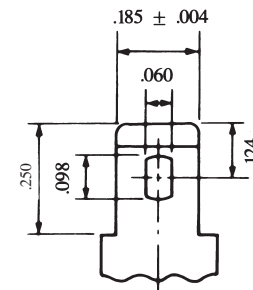
*Sealed Rechargeable
Lead-Acid Battery*

6V, 4.5Ah

Specifications

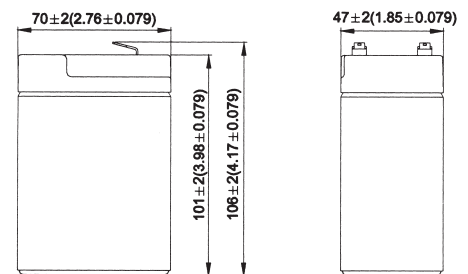
- **NOMINAL VOLTAGE:** 6V
- **NOMINAL CAPACITY:**
 - 20 hr. rate of .23A to 5.25V 4.50Ah
 - 10 hr. rate of .42A to 5.25V 4.20Ah
 - 5 hr. rate of .72A to 5.10V 3.60Ah
 - 1 hr. rate of 2.70A to 4.80V 2.70Ah
- **WEIGHT (approx.):** 1.87 pounds (0.85 kgs.)
- **ENERGY DENSITY (20 hr. rate):** 1.32 WH/cubic inch (80.6 WH/liter)
- **SPECIFIC ENERGY (20 hr. rate):** 14.4 WH/pound (31.8 WH/kg)
- **INTERNAL RESISTANCE OF CHARGED BATTERY:** 20 milliohms (approx.)
- **MAXIMUM DISCHARGE CURRENT WITH STANDARD TERMINALS:** 45 amperes
- **MAXIMUM SHORT-DURATION DISCHARGE CURRENT:** 135 amperes
- **OPERATING TEMPERATURE RANGE:**
 - CHARGE 5°F to 122°F (-15°C to 50°C)
 - DISCHARGE -4°F to 140°F (-20°C to 60°C)
- **CHARGE RETENTION (shelf life) at 68°F (20°C):**
 - 1 month 97%
 - 3 months 91%
 - 6 months 85%
- **LIFE EXPECTANCY:**
 - STANDBY USE 3 to 5 years
 - CYCLE USE (approx.):
 - 100% depth of discharge 250 cycles
 - 50% depth of discharge 550 cycles
 - 30% depth of discharge 1200 cycles
- **SEALED CONSTRUCTION:** Can be operated, charged or stored in any position without leakage.
- **STANDARD TERMINAL:** Quick Disconnect .187 or Optional .250
- **HOUSING MATERIAL:** ABS Resin
- **OPTIONAL:**
 - Container and cover made from Flame Retardant ABS (UL94-V0/L.O.I.>28%)
- Approved for shipping as non-hazardous, non-spillable

Terminal



INCH = MM	
.250	6.35
.185	4.70
.124	3.15
.098	2.49
.060	1.52
.031	0.79
.020	0.51
.004	0.10

Dimensions



UL listing pending - File No MH16464

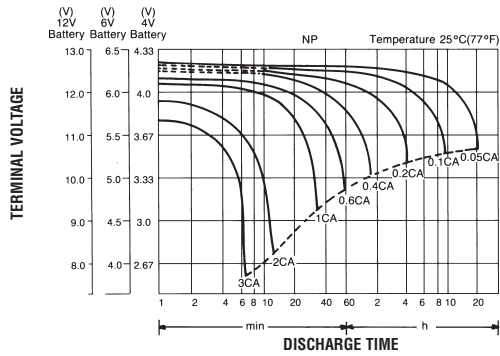
EnerSys[™]

Power/Full Solutions[™]

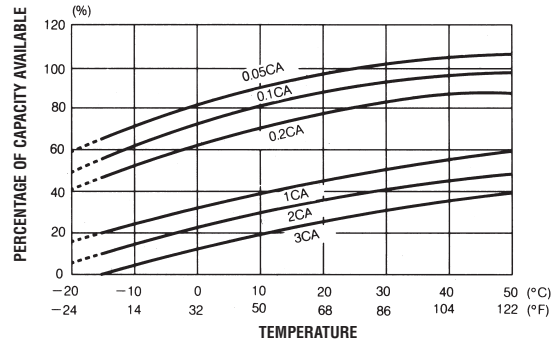


Publication No: US-NP4.5-6-001 • March 2005

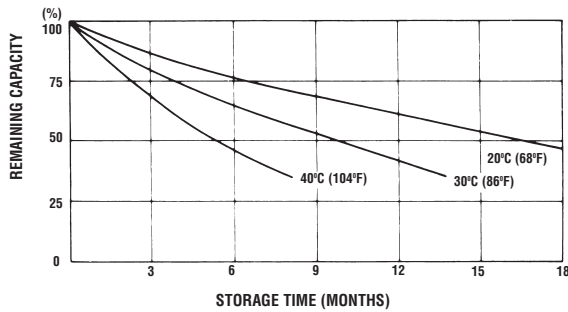
DISCHARGE CHARACTERISTIC CURVES AT 25°C (77°F)



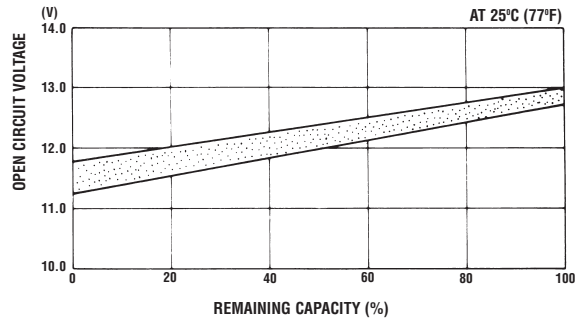
TEMPERATURE EFFECTS IN RELATION TO BATTERY CAPACITY



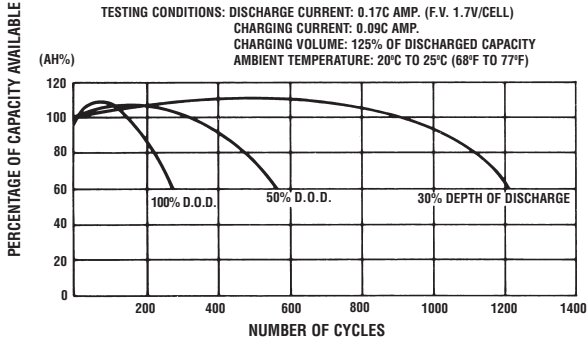
SELF DISCHARGE CHARACTERISTICS



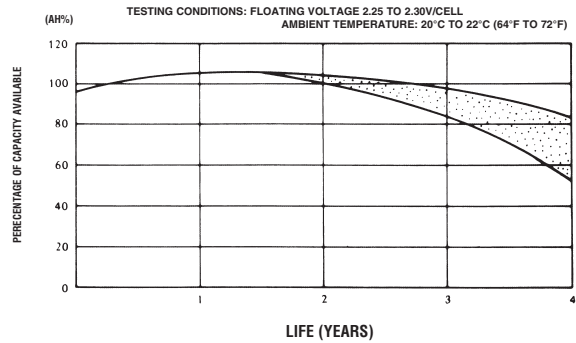
OPEN CIRCUIT VOLTAGE VS REMAINING CAPACITY



CYCLE SERVICE LIFE IN RELATION TO DEPTH OF DISCHARGE



FLOAT SERVICE LIFE



When the battery will be used by current in excess of 3C, consult with EnerSys prior to use.

CHARGING METHODS (At 20°C)

Cycle use: Maximum charging current 1.1A
Charging voltage 7.2 to 7.5V

CAUTION

- Avoid short circuit
- Do not charge in a sealed container.

Standby use: Float charging voltage 6.75 to 6.90V



EnerSys
P.O. Box 14145
Reading, PA 19612-4145
USA
Tel: +1-610-208-1991
+1-800-538-3627

EnerSys EMEA
Brussels, Belgium
Tel: +32 (0)2 247 94 47
EnerSys Asia
Guangdong, China
Tel: +86 755 2689 3639

Represented by:

